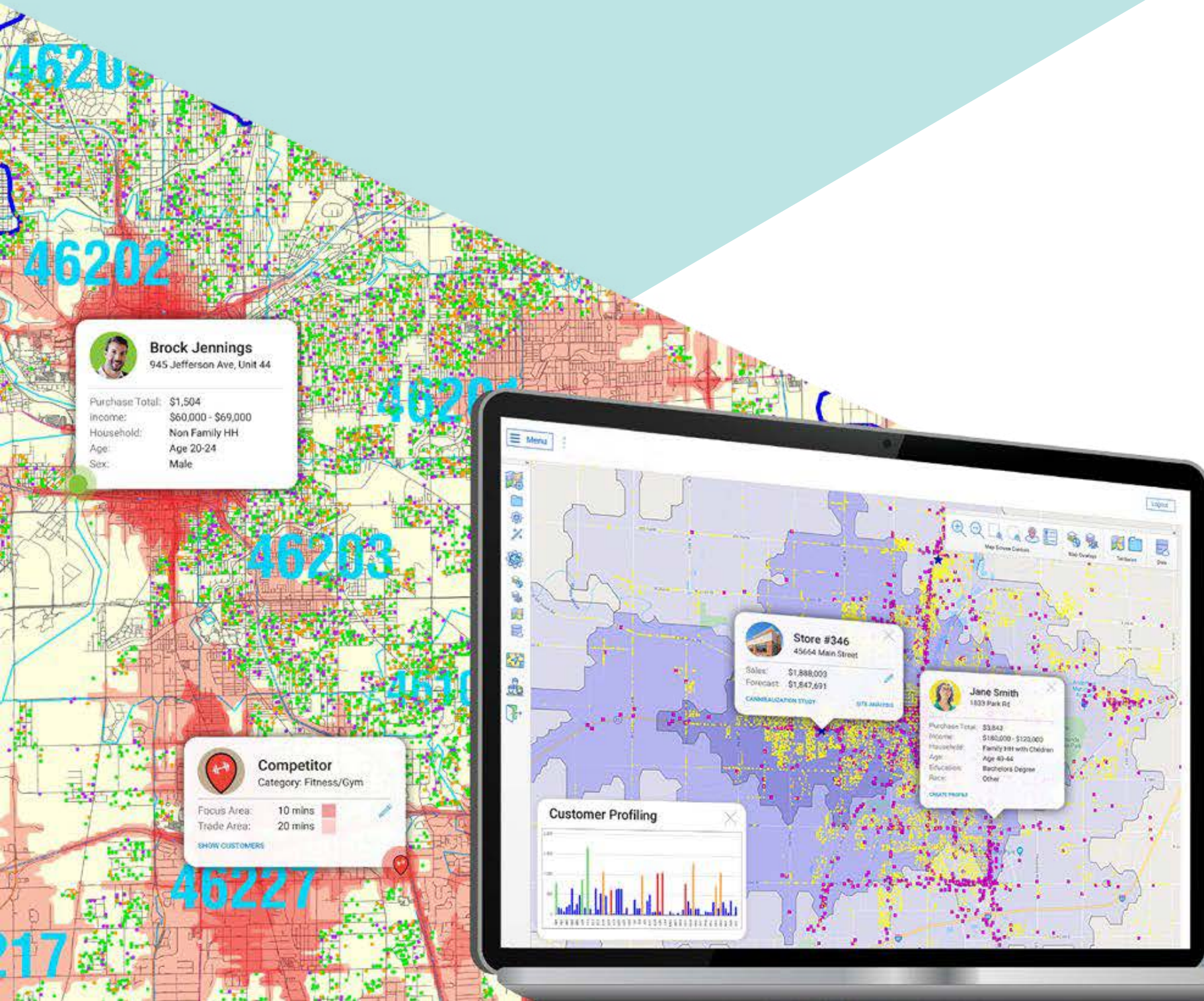


Analytic Solutions

Technology, Connectivity, Data, Invention

Insights into the **Impact** of **Location**,
Geography & **Data**

Tools that **Manage** that **Impact**
on **Your Organization**

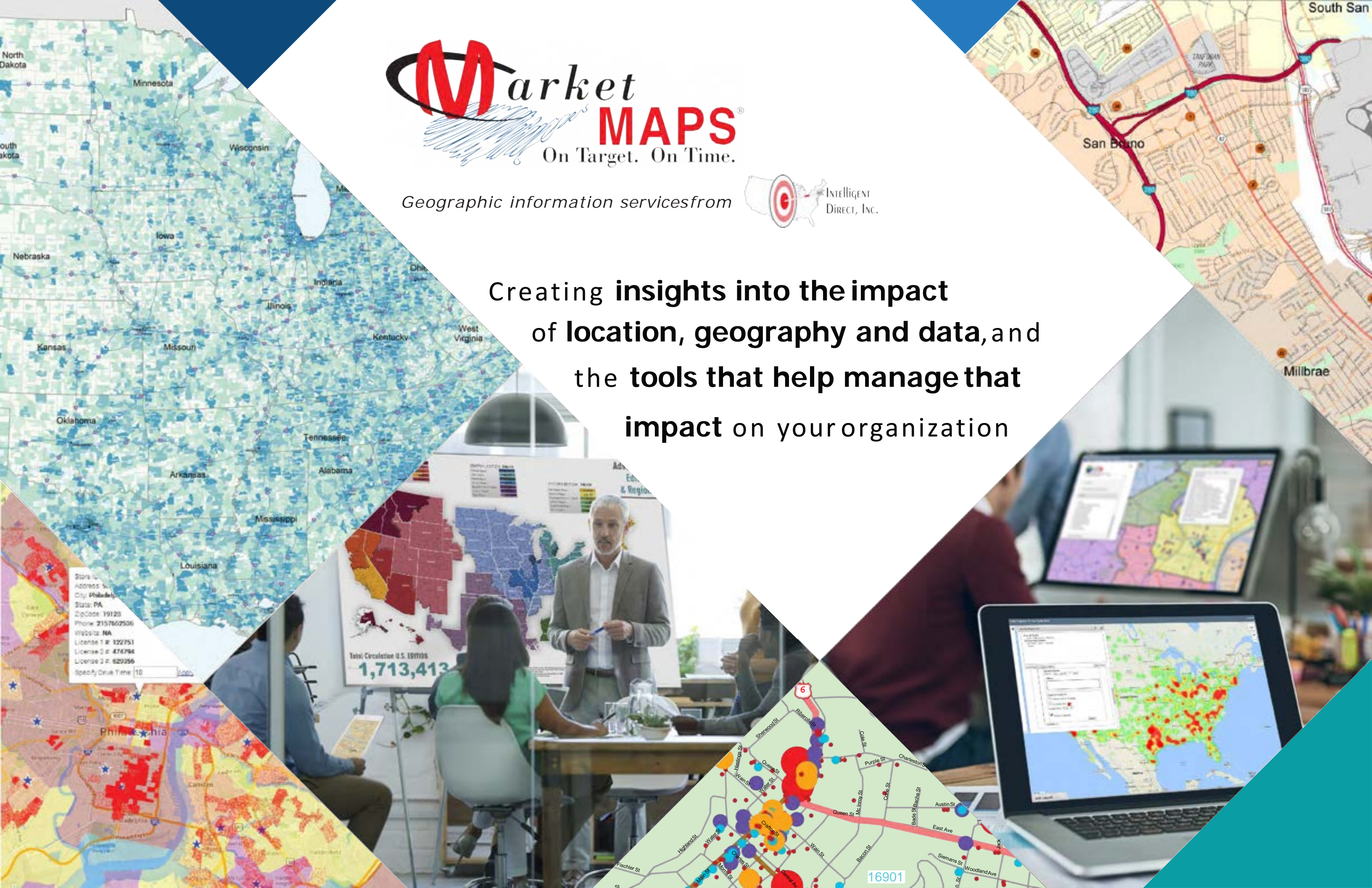




Geographic information services from



Creating **insights into the impact of location, geography and data**, and the **tools that help manage that impact** on your organization




Store ID:
Address:
City: Philadelphia
State: PA
Zip Code: 19129
Phone: 2157662506
Website: NA
License 1 #: 822751
License 2 #: 474794
License 3 #: 620356
Specify Drive Time: [10]

Total Circulation U.S. EDI705
1,713,413

16901



Geographic information services from  Intelligent DIRECT, INC.



Creative Invention & Re-Invention

30
YEARS

Analytics & Insights



Flow of Client Business Model



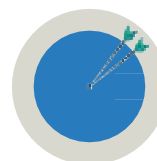
Data: People, Businesses,
Behavior, Results



Geographies:
Everything of Everywhere



Where You Need It.
The Way You Need It.



On Target. On Time.



Innovative Solutions for Thousands of Companies



Inventive Solutions for Every Application



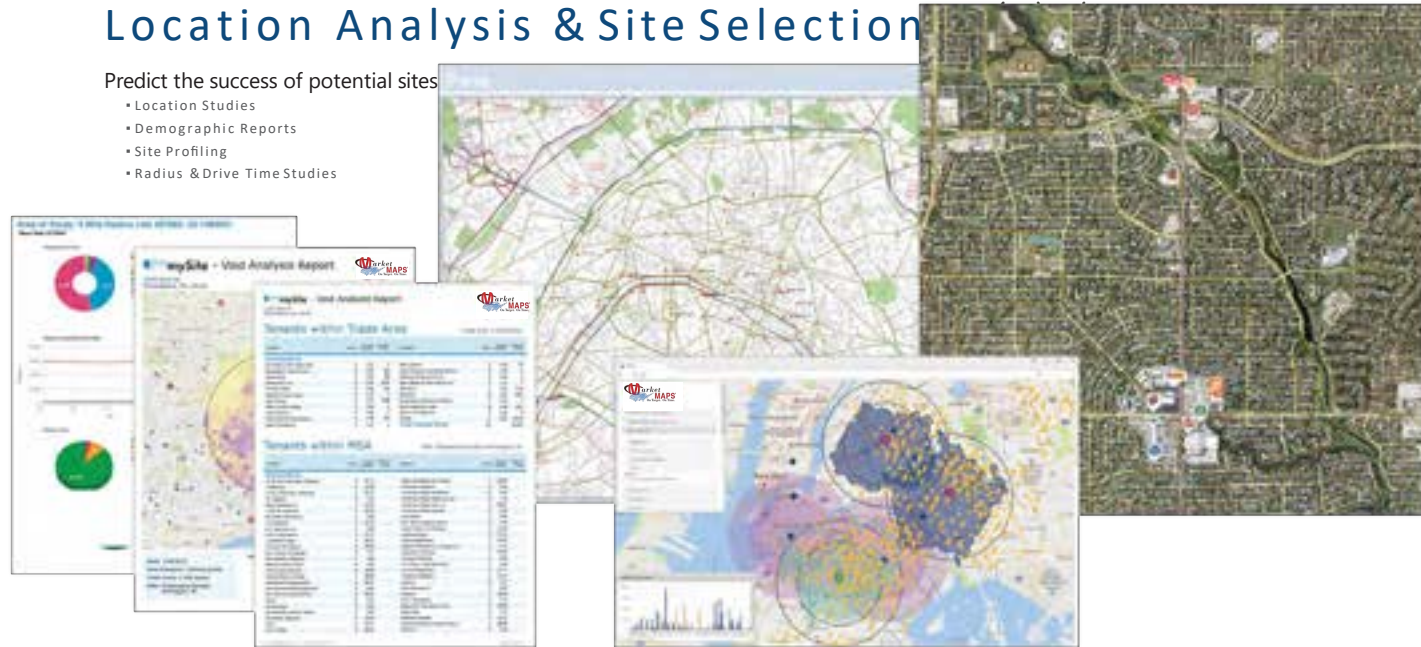
Geographic information services from



Location Analysis & Site Selection

Predict the success of potential sites

- Location Studies
- Demographic Reports
- Site Profiling
- Radius & Drive Time Studies



Territory Design & Management

Define, plan, manage and communicate your territories with

- Sales Territories
- Franchise Territories



Market Analysis

Find the best markets for growth

- Analyze at any level of geography
- Include data specific to your business



Direct Mail Management

Analyze the area around your location, even down to the household level

- Business Mailing List
- Consumer Mailing List



Profiling

Understand the spatial advantage to help you grow and manage your business.

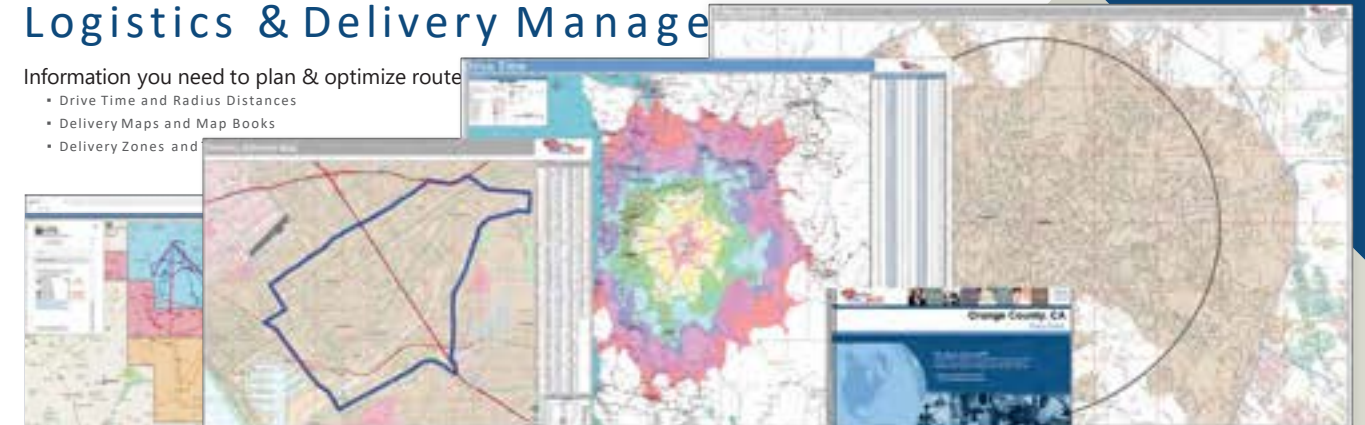
- Customer Profiling
- Site Profiling
- Territory Profiling



Logistics & Delivery Management

Information you need to plan & optimize routes

- Drive Time and Radius Distances
- Delivery Maps and Map Books
- Delivery Zones and



Online Self Service Information Products



Geographic information services from



135 Carriage House Dr, Jackson, TN 38305

DETAILS
Built in 1962, this property features 4 bedrooms, 1.1 acres lot, and 9,690 sq. Located on Carriage House Drive, just off I-40 at the Highway 43 Bypass.

DEMOGRAPHICS	1 mile	3 mile	5 mile
Average Household Income	\$49,130	\$45,892	\$42,457
Population	5,239	38,714	65,853
Median Age	41	36	37
Occupied Units/Owner	1,368	9,204	15,255

CONTACT INFORMATION
Jane Smith
C. 123.456.7891
O. 123.454.1777
Jane@janesmith.com

REAL ESTATE
Each office independently owned and operated

20/20 mySite Site Marketing Flyers



Maps of Everywhere from Popular Publishers

Custom Area Maps



Demographic Reports

Gap Reports

Void Reports

Crime Index Reports

Profile Reports

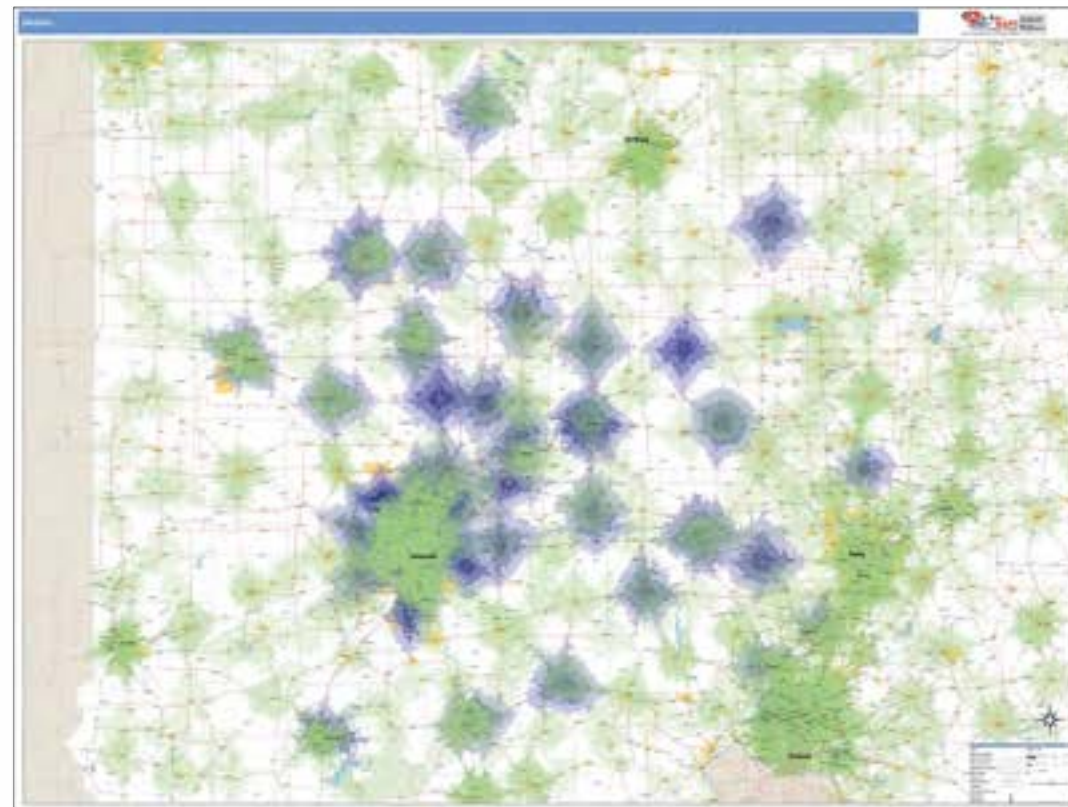
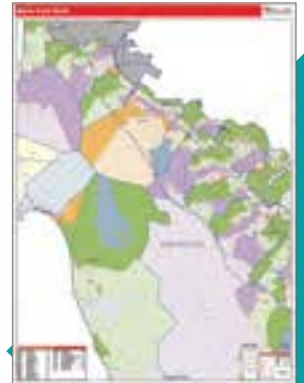
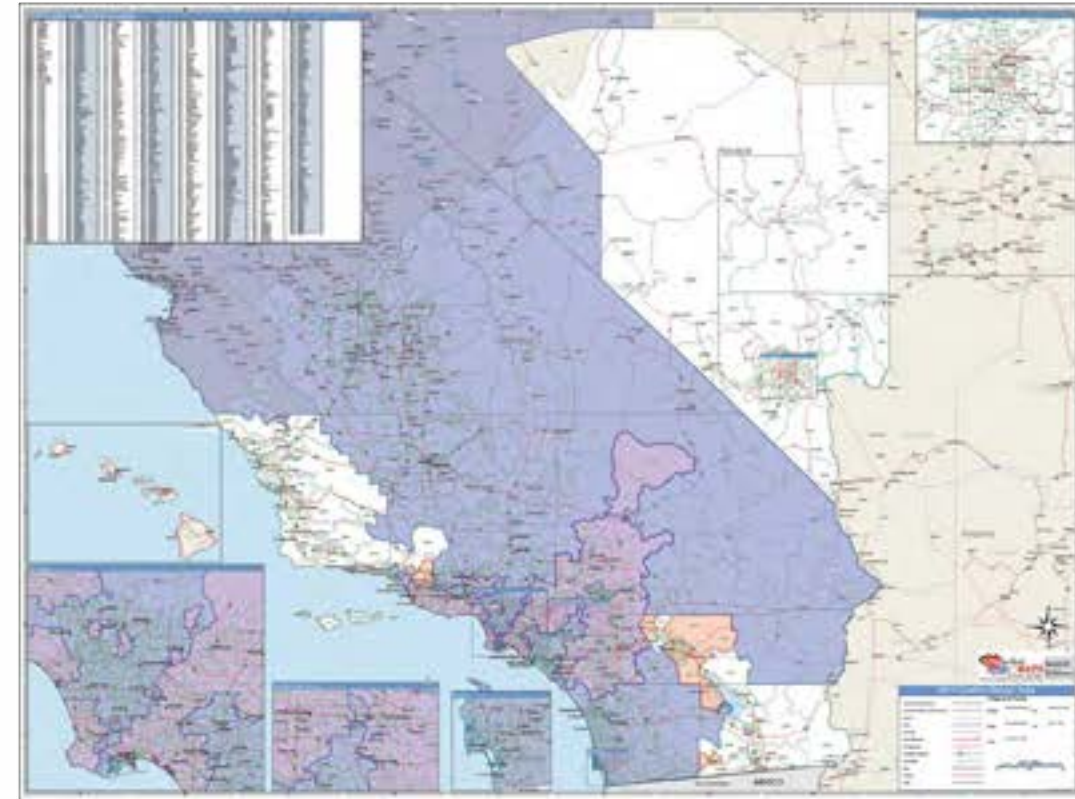
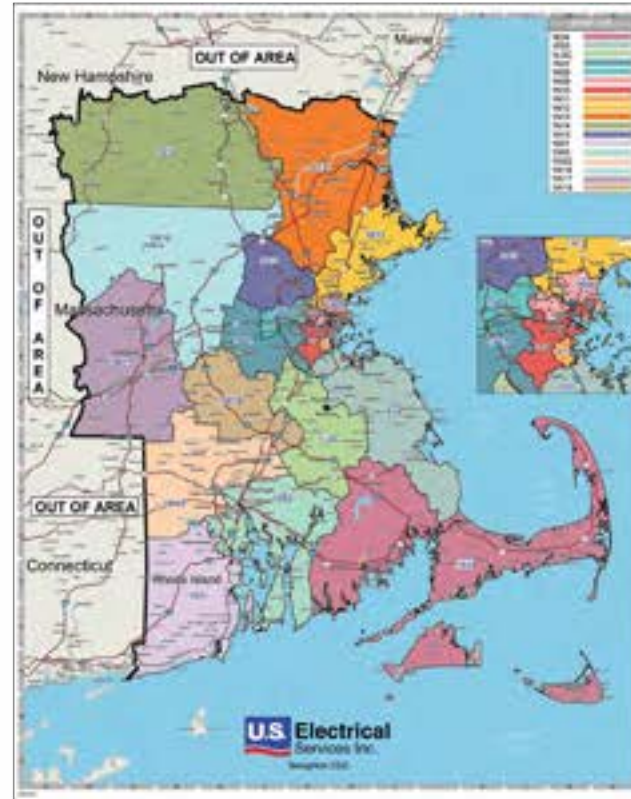


Customized Solutions Using Maps

Get the Custom Maps You Need. When You Need Them.



Geographic information services from

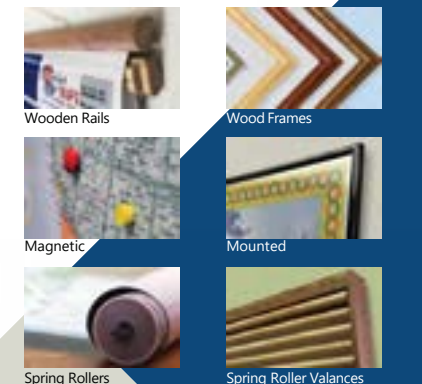


Wall Maps

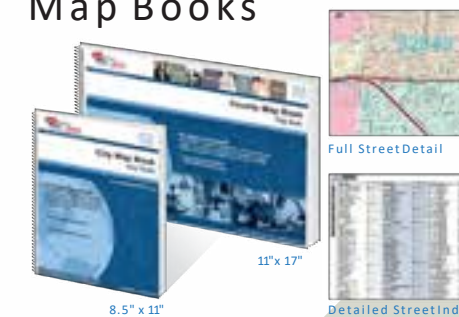


Map Sizes

Map Finishing Options



Map Books



Digital Maps

Available as Adobe PDF & Adobe Illustrator



Up-To-Date & Accurate Data



Geographic information services from

Data: People, Businesses, Behavior, Results

Demographics

- Current Year Estimates
- Projections
- Census Data

Psychographics

- Lifestyle & Behavioral Data
- Consumer Expenditure
- Religious & Political Data

Risk Indexes

- Weather Risk
- Crime Risk

Market Potential

- Supply & Demand
- Market Voids
- Unrealized Potential

Health Counts

- Population by Major Age Groups
- Number of Discharges

Business Counts

- Business Type & Name
- SIC & NIASC

Traffic Counts

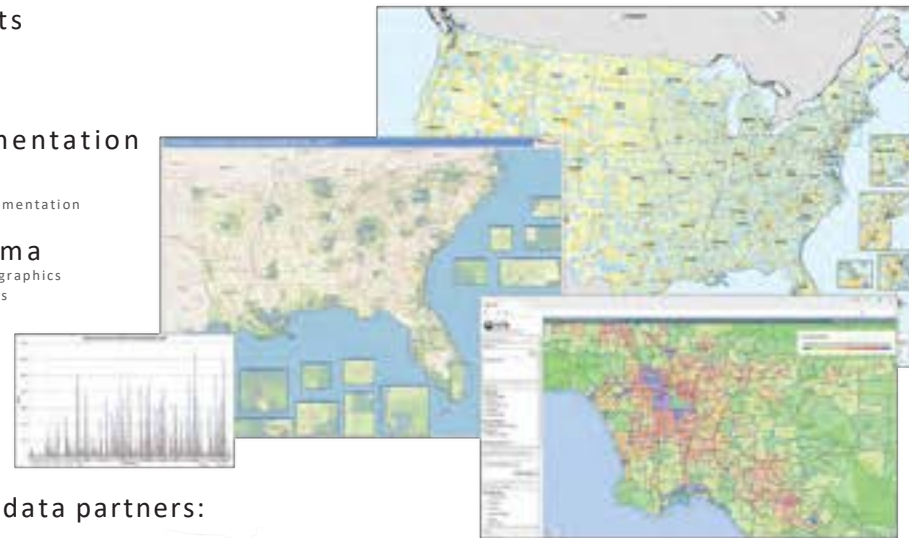
- Traffic Patterns
- Historical Trends
- High, Low & Median

Mosaic Segmentation

- ConsumerViewSM
- Predictive Insights
- The Mosaic USA® Segmentation

AGS Panorama

- Neighborhood Demographics
- Consumer Preferences



Some of our data partners:



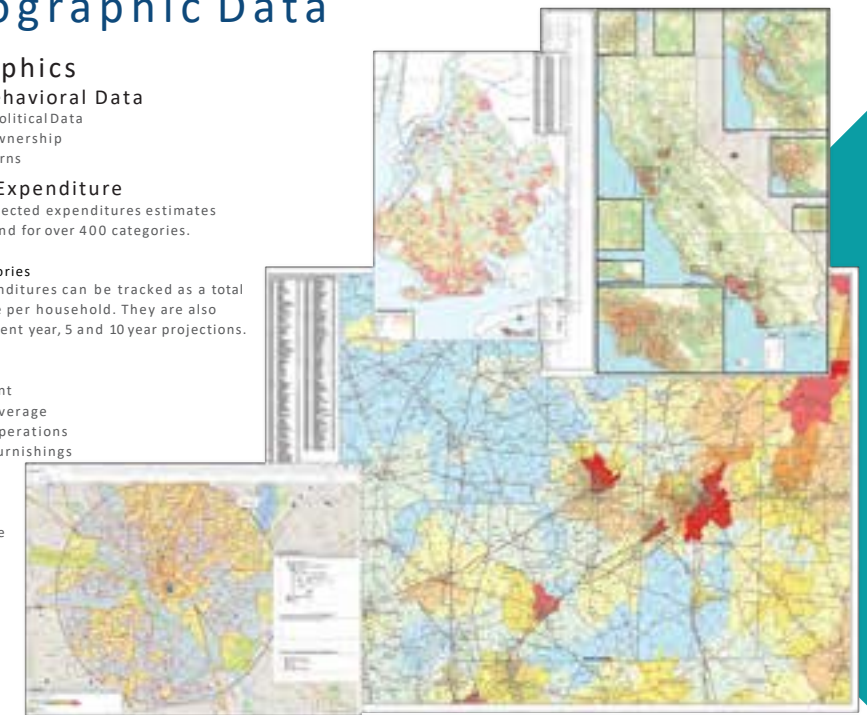
Demographic & Psychographic Data

Demographics

- Census Data**
 - 1970, 1980, 1990, 2000 and 2010
- Estimates**
 - Variables for Current Year Estimates
- Projections**
 - 5 And 10 Year Projections
 - Population Data
 - Household Data
 - Labor Force
 - Income Data
 - Dwellings
- Common Categories**
 - Population by Age
 - Population by Race
 - Population by Gender
 - Education Attainment
 - Labor Force
 - Total Household
 - Length of Residence
 - Average and Median Income
 - Number of Households by Income
 - Assets, Debt and Network
 - And More

Psychographics

- Lifestyle & Behavioral Data**
 - Religious & Political Data
 - Computer Ownership
 - Buying Patterns
- Consumer Expenditure**
 - Current and projected expenditures estimates of market demand for over 400 categories.
- Common Categories**
 - Consumer expenditures can be tracked as a total or as an average per household. They are also available for current year, 5 and 10 year projections.
 - Apparel
 - Education
 - Entertainment
 - Food And Beverage
 - Household Operations
 - Household Furnishings
 - Gifts
 - Health Care
 - Shelter
 - Personal Care
 - Reading
 - And more



Risk, Market Potential & Health Data

Risk Indexes

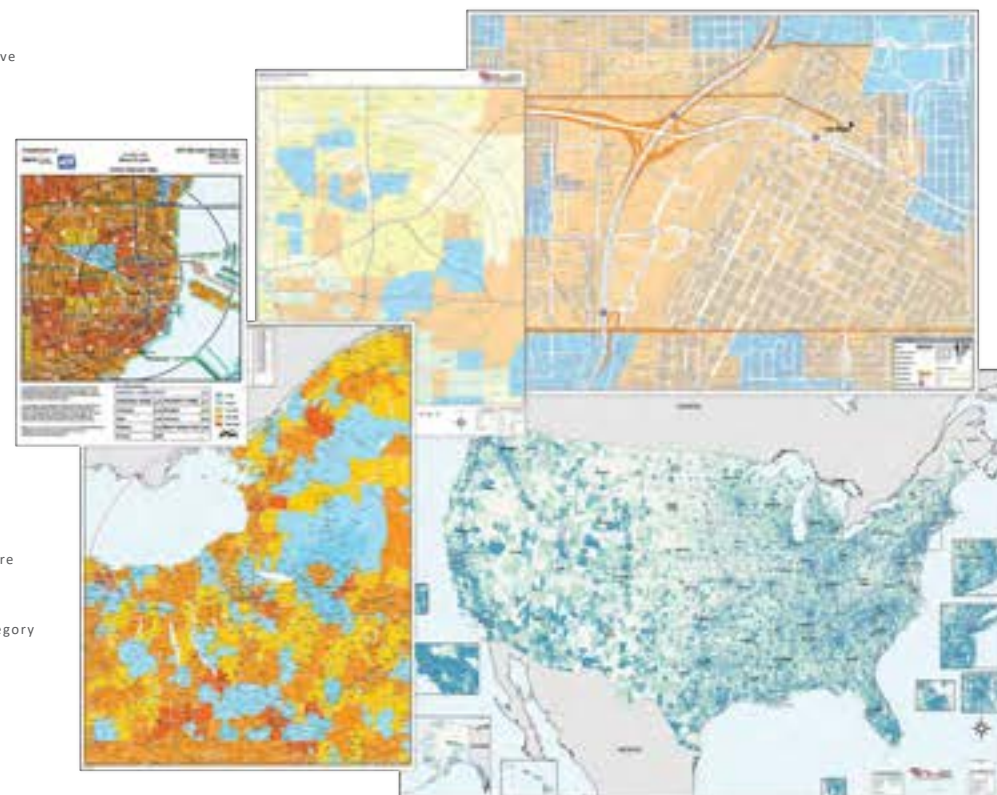
- Crime**
 - Relative risk of specific crime types based on extensive analysis of crime statistics.
 - Total crime
 - Personal Crime
 - Murder
 - Rape
 - Robbery
 - Assault
 - Property Crime
 - Burglary
 - Larceny
 - Motor vehicle theft
- Weather Risk**
 - Neighborhood level hazard indexes for earthquake and severe weather hazards.
 - Hurricane
 - Tornado
 - Hail
 - Wind

Market Potential

- Supply & Demand
- Market Voids
- Unrealized Potential

Health Counts

- Current year estimates and 5 year projections of healthcare service demand for MDC and DRG classifications.
- Common Categories**
 - Population by Major Age Groups
 - Number of Discharges by Major Diagnostic Category



Business Data, Traffic Counts, MOSAIC, AGS Panorama

Business Counts

- Vital information including detailed employment, establishment, retail sales, payroll information and daytime occupations.
- Total Establishments
- Total Employees
- Total Retail Sales
- Total Payroll
- Establishments by Size
- Establishments by Industry
- Employees by Occupation
- Payroll by major SIC division
- Payroll by NIASC division

Traffic Counts

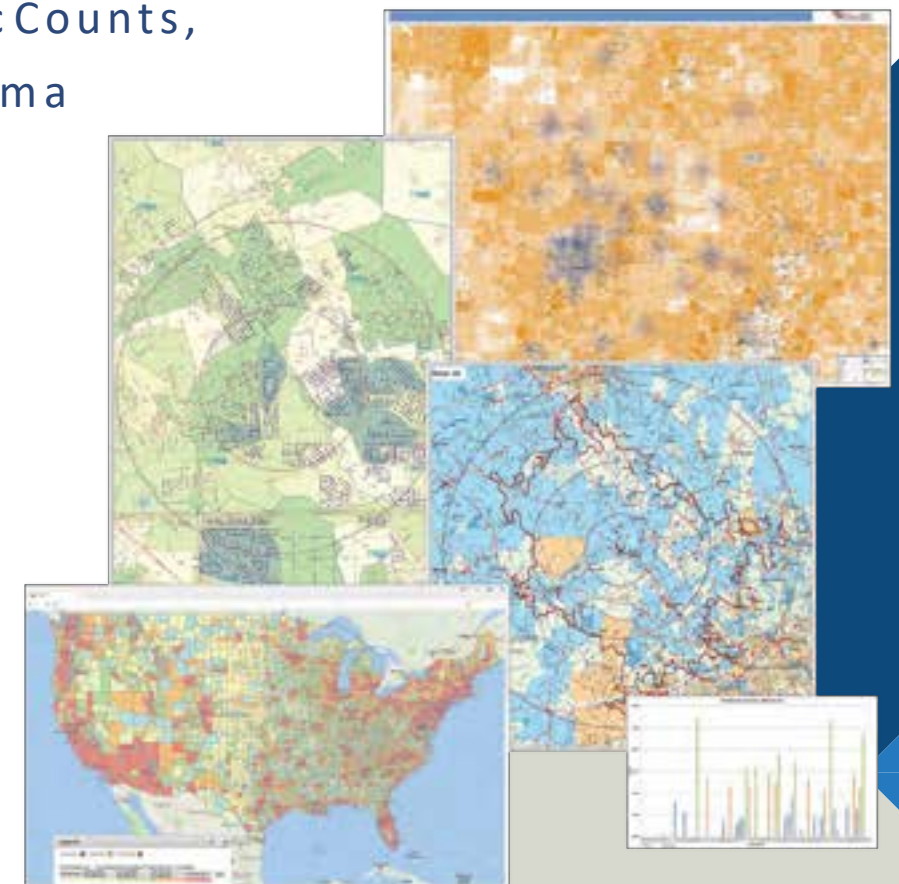
- TrafficMetrix counts are updated quarterly, and represent over 4.2 million traffic counts throughout the world and 1.4 million Published Counts across North America.
- Traffic Patterns
- Historical Trends
- High, Low & Median

MOSAIC Segmentation

- Neighborhood segmentation systems are classifications of geographic areas according to their demographic, lifestyle, and other attributes. The goal of classification is to define a set of segments that are as different as possible while ensuring that the neighborhoods assigned to each segment are as similar as possible.
- ConsumerViewSM national consumer database
- Predictive Insights
- The Mosaic USA® Segmentation

AGS Panorama

- Providing the essential linkage between neighborhood demographics and consumer preferences and attitudes. Panorama consists of 68 segments, with users encouraged to adopt either a pre-defined grouping or to create groupings of segments tailored to their own customer profiles.
- Neighborhood Demographics
- Consumer Preferences



Solutions for Everywhere

Geography and Data for over 195 countries.

TOMTOM

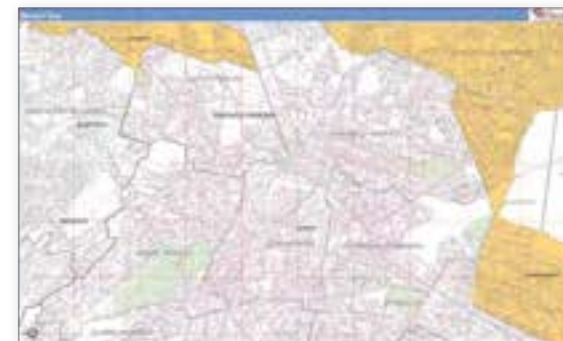
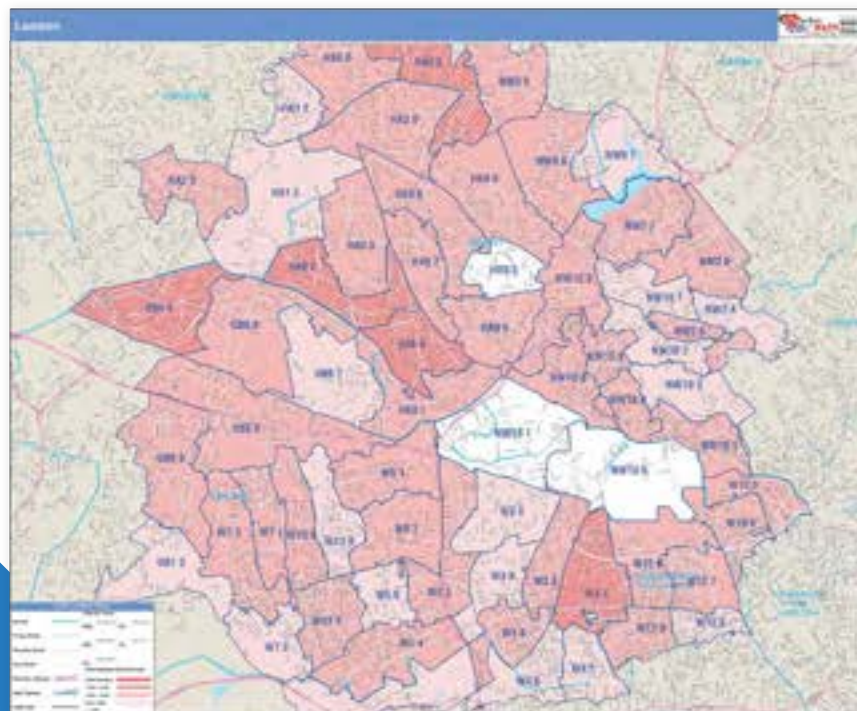
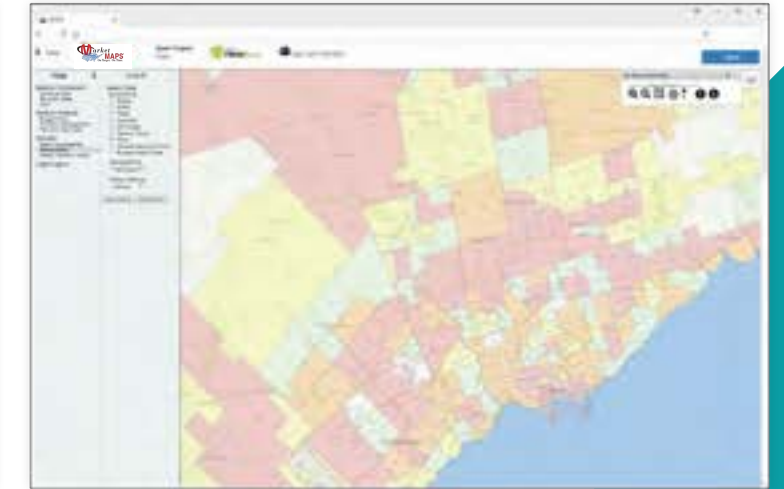
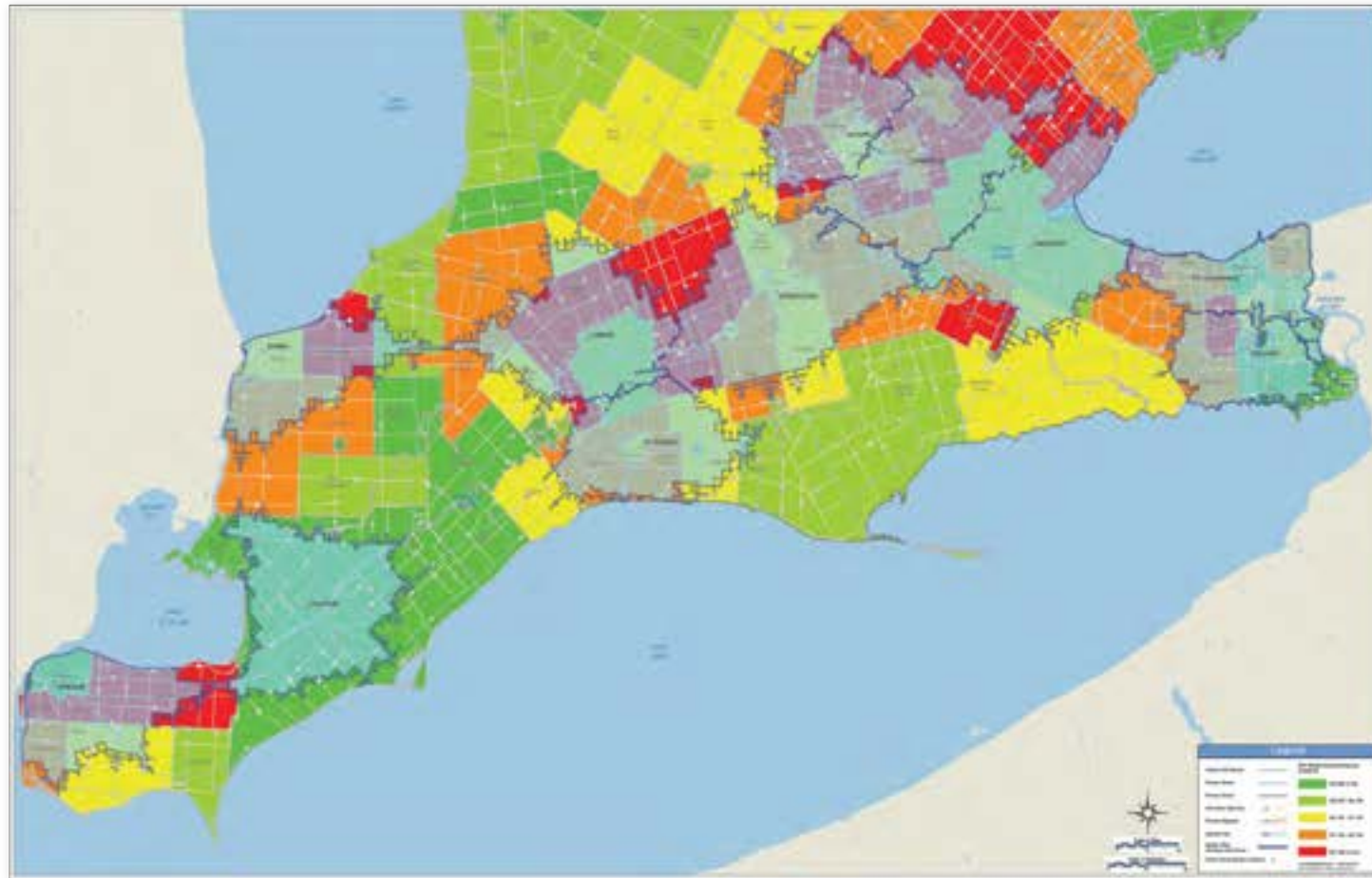


Spotzi

ENVIRONICS
ANALYTICS



Geographic information services from



Our Websites



Geographic information services from

IntelligentDirect.com



MarketMAPS.com



DeliveryMaps.com



mapsales.com



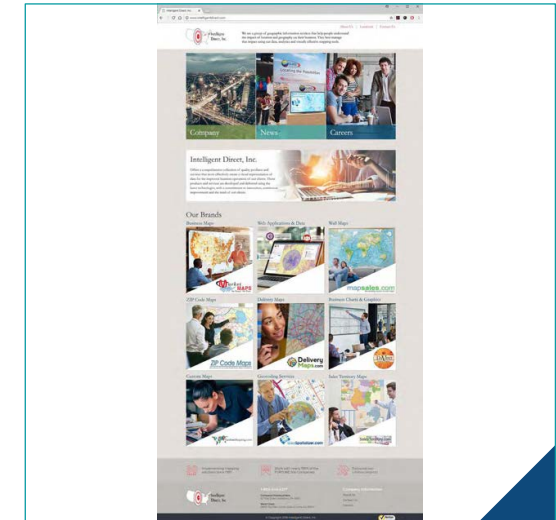
ZIPCodeMaps.com



GeoSpatializer.com



DaVinciBG.com



CustomMapping.com



SalesTerritory.com





Schedule
a Webinar



Develop a
Project Proposal



Thank you



Geographic information services from

